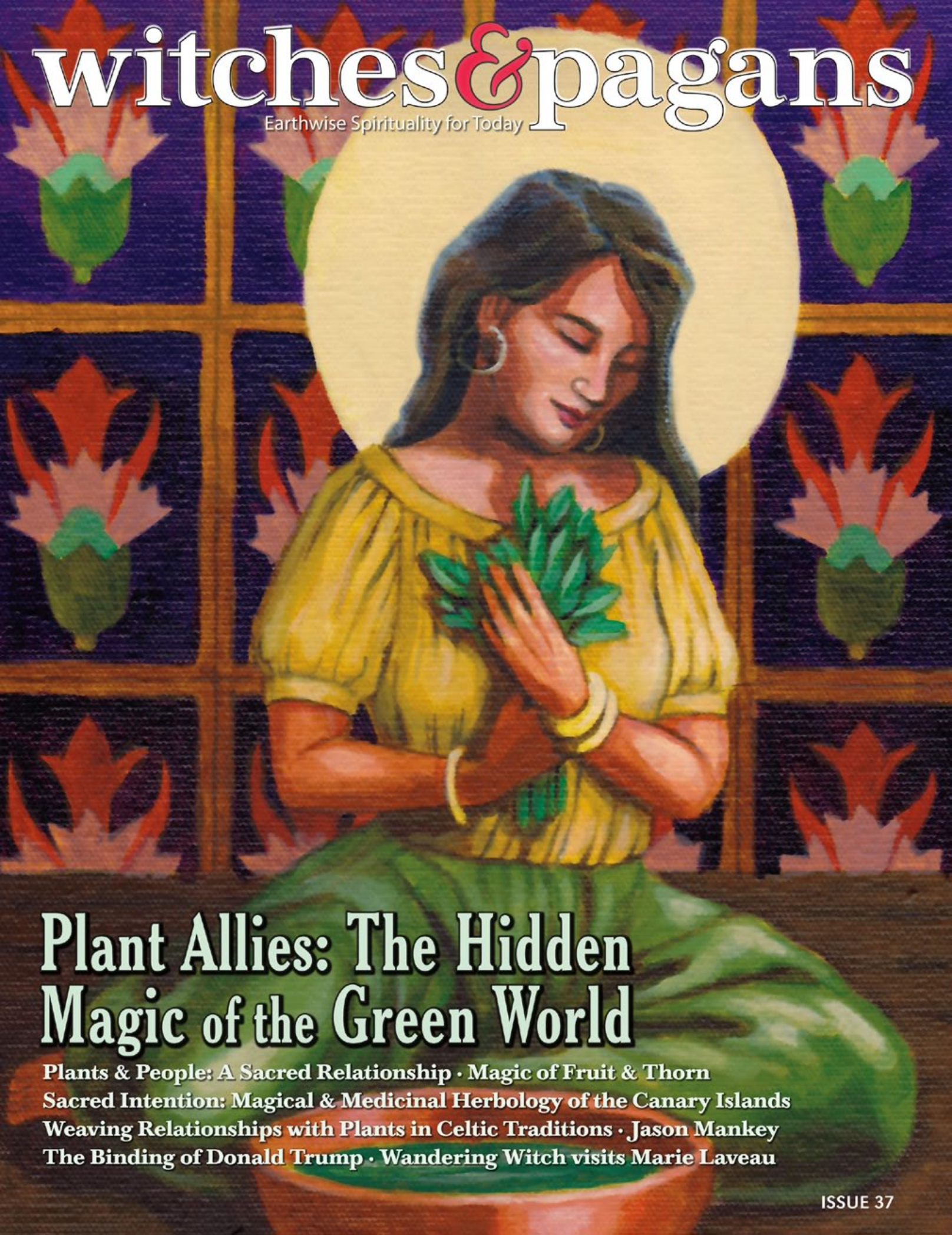


witches & pagans

Earthwise Spirituality for Today



Plant Allies: The Hidden Magic of the Green World

Plants & People: A Sacred Relationship • Magic of Fruit & Thorn

Sacred Intention: Magical & Medicinal Herbology of the Canary Islands

Weaving Relationships with Plants in Celtic Traditions • Jason Mankey

The Binding of Donald Trump • Wandering Witch visits Marie Laveau

BBI Media

Magazines that feed your soul.

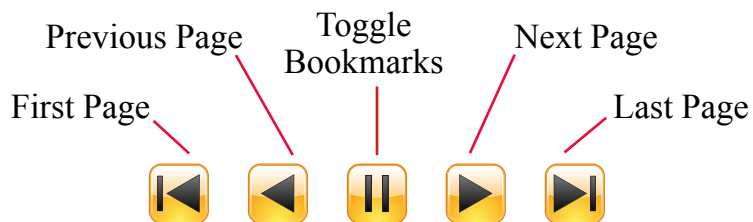


Plus: The Blessed Bee, Crone, Crone Chronicles, newWitch, PanGaia and GreenMan magazines.

Visit our PaganSquare.com blogosphere.

Navigation Controls

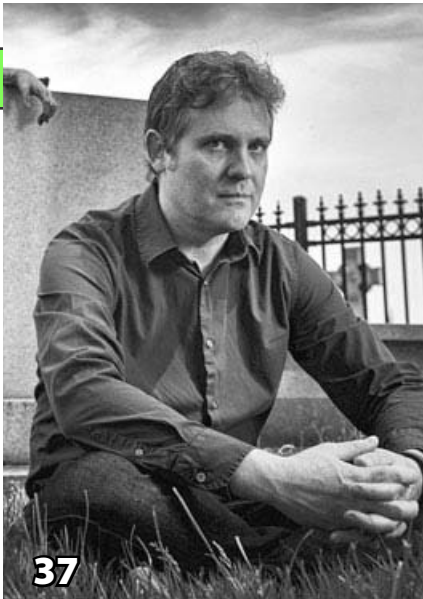
Availability depends on the reader application.



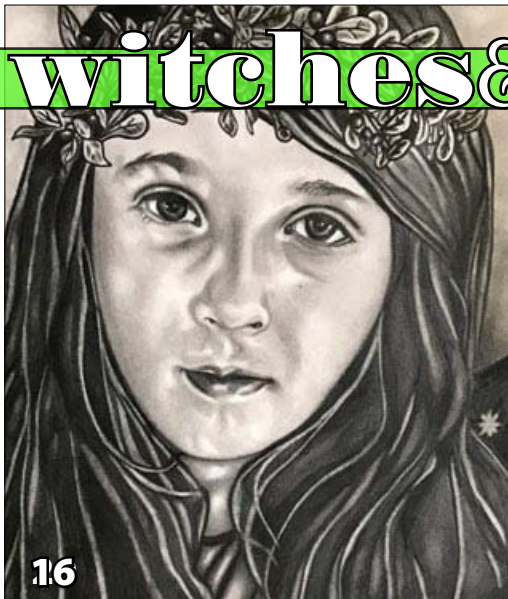
PLANT ALLIES

witches & pagans

Earthwise Spirituality for Today



37



16



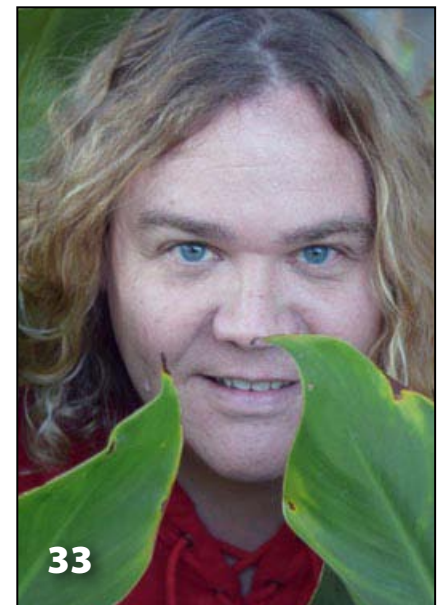
47

People, Place, & Practice

- 33** A Witch Next Door. A visit with author, blogger, workshop leader extraordinaire and Pagan celebrity **Jason Mankey**. *By Debra Deangelo.*
- 37** The Binding of Donald Trump. An interview with Pagan, magician, and activist **Michael Hughes**. *Interview by Hecate Demetersdatter.*
- 43** Devoted or Delusional? **Anthony Rella** discusses ways to bridge the gap between the mental health and spiritual communities.
- 47** Wandering Witch Visits Marie LaVeau. **Natalie Zaman** searches for signs of the Voodoo Queen of New Orleans.

In this issue: Plant Allies

- 7** Plants & People: A Sacred Relationship. **Fay Johnstone** teaches us how to transform our lives by connecting with the spirits of plants.
- 11** Sacred Intention. Discover the magical and medicinal herbology of the Canary Islands with **Carolina Gonzalez**. *With original artwork by the author.*
- 16** Singing to the Mistletoe. **Sithearain Nicleòid** describes Native Celtic plant medicine and magic. *With original artwork by Cara Gwizd.*
- 22** The Search for “Moly.” Join Hellenic polytheist **Chris Aldridge** on his quest for the identity of a magical plant described in Homer’s Odyssey.
- 25** Dreaming of Datura. Australian witch and herbalist **Stacey Carroll** describes her encounters with English plants in the wilds of New South Wales.
- 28** Magic of Fruit & Thorn. Hedgewitch **Sara L. Mastros** reveals the secrets of a potent witch’s triumvirate: hawthorn, blackhaw, and blackthorn.



33

PLANT ALLIES



witches&pagans



(ISSN 1546-2838) is published twice yearly by BBI Media, Inc., P. O. Box 687, Forest Grove, OR 97116. 503-430-8817. 4-issue (2 year) subscriptions by mail: in U.S. \$24, Canada \$36, overseas \$41. 4-issue (2 year) digital subscriptions delivered by download, worldwide: \$24 USD.

Editor: Anne Newkirk Niven
Photo editor, pre-press & tech wizard: Alan Niven
Social Media: Arthur Niven
Proofreader: Oma Ryan
Fulfillment: Andrew Niven

Cover image this issue: "Sacred Intention" by Carolina Gonzalez ©2019 www.brujacarolina.com



Contents copyright ©2019 BBI Media, Inc. www.witchesandpagans.com

<https://www.facebook.com/WitchesandPagans/>
Twitter @WnP_Official
Tumblr: PaganSquare.Tumblr.com

Unless otherwise noted, all photography included is of professional models, and does not represent any person(s) affiliation with Paganism, Wicca, or other magical practices; or their participation in any activities or professions other than as photographic models.

Departments

- 3 **CONTRIBUTORS** Meet our authors and artists.
- 5 **CALLIOPE'S CORNER** Pagan poetry by Molly Remer, Gilbert Sarabia, Chris Rowe, and Wendy Howe.
- 75 **SPELL IT OUT** Reviews with moxie. Plus *Bespelled* mini-reviews.
- 83 **INSIGHT** "Did You Think the Gods were Lying?" by John Beckett.
- 85 **GIVE & TAKE** Letters and short articles from our readers.
- 87 **MARKETPLACE** Products, Goods, & Services.
- 88 **BENEDICTION** Letter from the editor.

Teachers & Mentors

- 55 **OLD WORLD WITCHCRAFT** *Raven Grimassi*
Mysteries of the Thorn-Blooded Rose.
- 57 **CONNECTIONS** *Archer*
Sacred meals connect us to the Gods (and each other).
- 59 **LOOKING FOR TROUBLE** *Hecate Demetersdatter*
What's up with Plant (and Animal) Allies?
- 61 **EVERYDAY WITCH** *Deborah Blake*
In spring, looking towards the harvest to come.
- 63 **HERBAL JOURNEYS** *Jamie Della*
Yarrow: a powerful ally and protector.
- 65 **SPINNING THE COSMIC WHEEL** *Diotima Mantineaia*
Uranus is a trickster and rebel. Now its energy is on the rise.
- 67 **BUCKLE UP** *H. Byron Ballard*
The one Pagan commandment: connect to the Earth.
- 69 **BY LOVE, WILL, AND WISDOM** *Christopher Penczak*
Mysteries of the Sorcerer: the seeker of hidden knowledge.
- 71 **SECOND STAR TO THE RIGHT** *Ivo Domínguez, Jr.*
Learn from the magic and mystery of the Green Kingdom.
- 73 **TWO MANY WITCHES** *Thorn Mooney & Eurus*
Irreverent Answers to Your Questions: *What famous witches do you look up to?*