

witches & pagans



the **MAGICK** *of* **FIRE**

SHARON KNIGHT: SONGSTRESS OF ENCHANTMENT

**Brave Enough to Burn: the Flow of Firedancing • Thea Sabin •
Beginner's Guide to Novena Candles • Five Senses of Fire Magick
Gede Parma: Magick Down Under • Witches' Guide to New Mexico
Fight Fire with Fire: My Experience with Protection Magick •
Sehket & Me • New columns by John Michael Greer & Teo Bishop.**

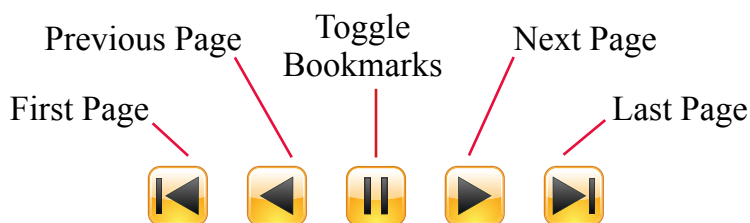


Magazines that feed your soul and liven your spirits.



Navigation Controls

Availability depends on reader.



witches & pagans

Earthwise Spirituality for Today

features

this issue: elemental magick of fire



34

people

21 **A CONVERSATION WITH THEA SABIN**
Thea has written both for new seekers and experienced teachers. She talks with **Robert Scott** about her experience with these divergent audiences.

42 **THROUGH THE EYES OF ENCHANTMENT: SHARON KNIGHT**
Michael Night introduces us to gothic tribal songstress of Pandemonaeon.

53 **GEDE PARMA: FRUIT OF THE VINE**
Australian witch and author shares his views on next-Gen Witches, “fluffy bunnies,” and Down-Under Paganism with **Charlynn Walls**.

place

25 **A WITCHES’ GUIDE TO NEW MEXICO**
Amanda Morris is our guide to the amazing Land of Enchantment.

practice

17 **GLASS & FLAME: THE MAGICK OF NOVENA CANDLES**
Today’s practitioners have adopted this Catholic staple for a wide variety of magical purposes — let **Bri Saussy** teach you to use them as well.

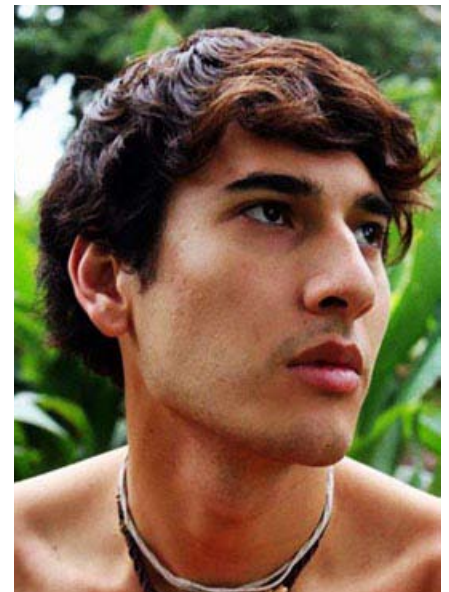
34 **BRAVE ENOUGH TO BURN** **Satyros Phil Brucato** introduces us to “the flow arts” of dancing with the most hazardous element: fire.

47 **SENSING FIRE: ONE ELEMENT, FIVE SENSES**
What would it be like to experience fire beyond the ritual circle? **Susan Harper** teaches us to bring this mercurial element into our daily lives.

50 **FIGHT FIRE WITH FIRE** **Cathie Rayes** shares her experience with protection magick, and when “mirror spells” just aren’t enough.



21



53



42

witches&pagans

Earthwise Spirituality for Today



73



75



31

departments

- 3 **EVOCATION** Letter from the editor.
- 4 **CONTRIBUTORS** Meet our writers!
- 5 **GIVE & TAKE** Feedback from readers.
- 9 **CLIO'S CORNER** Pagan poetry.
- 11 **ENCHANTMENT** *Hephaestus's Forge* by Dawn Sperber.
- 15 **INSIGHT** *Pagans & Politics* by Valentine McKay-Riddell Ph.D.
- 31 **SPOTLIGHT ON PAGAN MUSIC** A visit with the bewitching **Ana**.
- 79 **SPELL IT OUT** Reviews with moxie. Plus *Bespelled* mini-reviews.
- 86 **MARKETPLACE** Products & Services.
- 88 **MY PATH** In this issue, "Fire in the Belly: Sekhmet & Me"

teachers & mentors

- 59 **OLD WORLD WITCHCRAFT** *Raven Grimassi*
- 63 **CONNECTIONS** *Archer*
- 65 **LOOKING FOR TROUBLE** *Hecate Demetersdatter*
- 67 **BEYOND THE CIRCLE** *Ashleen O'Gaea*
- 69 **WYRD WAYS** *Galina Krasskova*
- 71 **MAGICK ON A SHOESTRING** *Deborah Blake*
- 73 **LESSONS FROM THE GROVE** *Teo Bishop*
- 75 **THE OPERATIVE DRUID** *John Michael Greer*
- 77 **THE CRAFTY CURMUDGEON** *Fritz Muntean*



witches&pagans

(ISSN 1546-2838) is published three times yearly by BBI Media, Inc., P. O. Box 687, Forest Grove, OR 97116, and at additional mailing offices. Periodicals postage paid at Forest Grove, OR 97116 and at additional mailing offices. 4-issue subscriptions: in U.S. \$23, Canada \$33, elsewhere \$38. POSTMASTER: Send address changes to *witches&pagans*, P. O. Box 687, Forest Grove, OR 97116.

Editor: Anne Newkirk Niven; Art Editor, Design and IT Support: Alan Niven; Editorial Assistant: Arthur Niven; Proofreader: Oma Ryan; Office Deity: Andrew Niven. Cover image © 2013 Winter.

Office: BBI Media, *witches&pagans*, P. O. Box 687, Forest Grove, OR 97116 · USA · Phone 888-724-3966 or (503)430-8817.



Office hours 9 a.m.- 3 p.m. Pacific, M-F. Contents copyright ©2012 BBI Media, Inc. Printed by Ripon Printers, Ripon, WI.

www.witchesandpagans.com · email form: www.bbimedia.com/email · Order online at <http://bbimedia.com/store/>. On facebook. com ("like" Witches and Pagans), and on Twitter <http://twitter.com/WitchesandPagan> ("Pagan" is singular not plural).

Unless otherwise noted, all photography included herein is of professional models, for illustrative purposes only and does not represent any person(s) affiliation with Paganism, Wicca, or other magical practices; or their participation in any activities or professions other than as photographic models.